

### Specifications

備注 (Remark)

1. 材料 (Material)

膠芯: PA9T/LCP+30%G.F UL94V-0, 顏色: 黑色

Housing: PA9T/LCP+30%G.F UL94V-0, Color: Black

端子: 黃銅

Contact: Brass

2. 特性 (characteristics):

額定電流: 3.00AMP

Rating Current: 3.00AMP

接觸阻抗: 20mΩ Max

Contact Resistance: 20mΩ Max

絕緣阻抗: 1000MΩ Min

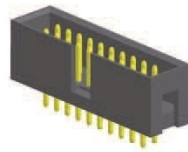
Insulating Resistance: 1000 MΩ Min

耐電壓: AC 500V/分鐘

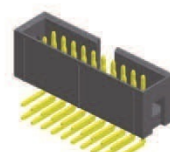
Withstanding Voltage: AC 500V/Minute

溫度範圍: -40° C to +105° C

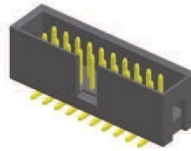
Temperature Range: -40° C to +105° C



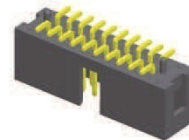
B254-22PXXXXXX1



B254-22RXXXXXX1

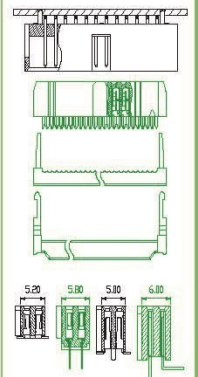


B254-22SXXXXXX1

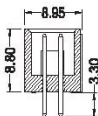
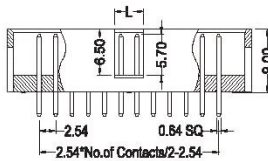
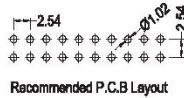
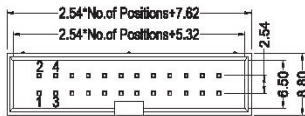


B254-22SXXXXXX2

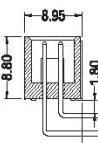
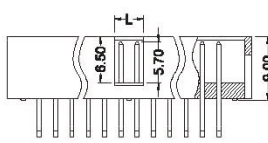
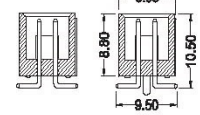
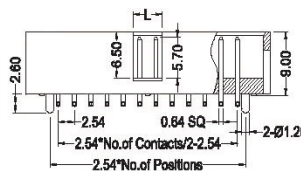
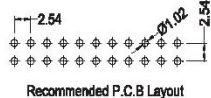
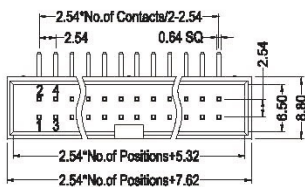
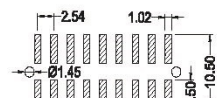
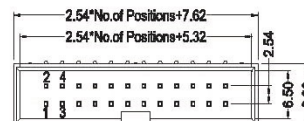
Mating With/配對母座:



BOX HEADER B



| L     |         |
|-------|---------|
| 6P~8P | 10P~64P |
| 4.00  | 4.40    |



| L     |         |
|-------|---------|
| 6P~8P | 10P~64P |
| 4.00  | 4.40    |

| L     |         |
|-------|---------|
| 6P~8P | 10P~64P |
| 4.00  | 4.40    |

**B254-22**

**X**

**XX**

**XX**

**X**

**X**

**X**

**Contact Shape:**  
P: Straight  
R: Right Angle  
S: SMT

**No. Of Pins**  
06~64P

**Contact Plating**  
Full Of Gold  
G0=0.8u"  
~  
G9=30u"  
S1=Ordinary Tin Plated  
S2=Matte Tin Plated  
S3=Tin-plated High-temperature

**Insulator Colour**  
B: Black  
G: Grey

**Packing**  
A: PE Bag  
R: Tape & Reel  
T: Tube  
D: Tube+CAP  
E: Tray

**Journal Number**  
1: Type1 (without Post)  
2: Type2 (with Post)